

BackSaver Installation Manual



Bosch®/Makita®-

V3.0



Patent# 7617885

BackSaver Patent #10646931



Table of Contents

<i>Adapter Instructions.....</i>	18
<i>Product Display.....</i>	2
<i>Instructions.....</i>	3-12
<i>How to properly use BackSaver.....</i>	13-14
<i>Disclaimer and Warranty.....</i>	16

BACKSAVER



Bosch® is a registered trademark of Robert Bosch GmbH and not affiliated with BackSaver 2005, LLC.
Makita® is a registered trademark of Makita Corporation and not affiliated with BackSaver 2005, LLC

Warning: Make sure the drill is unplugged or the battery is disconnected while attaching the BackSaver

****Follow all instructions. Failure to comply with instructions could result in serious injuries!**

Step 1

Unscrew the handle clamp knob to remove the handle bracket from the BackSaver.

Step 2

Before attempting to attach the BackSaver, ensure familiarity with the brand drill, Bosch® or Makita®, being used and the coordinating holes on the BackSaver for each brand and their models. The elongated slot in the BackSaver coordinates with Makita® Drill models HR4041C, HR4013C, HR4002 and Makita's® battery-operated model as shown in the middle photo. The single hole next to the elongated slot coordinates with Bosch® models 540M, 540S, 11264SDS and 11265Spline as shown in the bottom photo.



Handle Bracket

MAKITA® MODELS



HR4041C, HR4013C, HR4002, and Battery-Operated Makita®

BOSCH® MODELS



Bosch® models 540M, 540S, 11264SDS and 11265Spline

Step 3

Remove Bosch® or Makita® forward handle rubber grip (factory) from the Bosch® or Makita® Hammer Drill.

Step 4

For Makita® hammer drills: Remove the plastic cover on the bottom section of the Makita® forward handle to expose the metal band. Insert provided foam piece into metal band to secure bolt in bottom section of the Makita® forward handle as shown in the photos. Replace the plastic cover of the bottom section of the Makita® forward handle.

For Bosch® hammer drills: Remove plastic cover on the bottom section of the Bosch® forward handle to expose the metal band. Remove the Bosch® supplied bolt and replace it with the BackSaver supplied bolt. Replace the plastic cover. Place large grey washer in the top of the bottom section of the Bosch® forward handle as shown in the photo.



Forward Handle

Provided Foam Piece for Makita® models

Insert into Makita® Handle Guard



Foam allows for bolt to stay in place.



BackSaver Supplied Washer (For Bosch® Models Only)

Step 5

Ensuring the compatible model drill is being used, attach the BackSaver by lowering the BackSaver onto the drill with the bolt of either the Bosch® forward handle or the Makita® forward handle through the coordinating hole of the BackSaver.

For the Bosch Drill **GBH18V-40C** you will need to adjust the metal band to sit as close to the body of the drill as possible. See photos on pg 8 for illustration.



Makita®/Bosch®
Forward Handle

Step 6

Screw either the Bosch® forward handle rubber grip or the Makita® forward handle rubber grip back on loosely as shown in the photo.

***Do NOT tighten the handle until the end of Step 7**

GBH18V-40C SHOWN BELOW



Step 7

Attach the handle bracket to the drill by securing it with the handle clamp knob. Make sure the handle bracket does not engage the Bosch®/Makita® trigger when attaching. If it is engaging the Bosch®/Makita® trigger, the BackSaver will need to be re-adjusted. Make sure the BackSaver trigger is the only item engaging the Bosch®/Makita® trigger as shown in the photo, not the handle bracket. After aligning properly, tighten the handle clamp knob to the handle bracket.

****Make sure the handle bracket is always secure in the correct location. If the handle bracket would become loose, it could activate the Bosch®/Makita® trigger. Make sure if this happens, STOP IMMEDIATELY, unplug or disconnect the battery and re-align the handle bracket.**

****Again, make sure the hammer drill is unplugged or the battery is disconnected while attaching or adjusting parts of the BackSaver!**



Handle Bracket



Handle Clamp Knob

Step 8

Tighten the Bosch® or Makita® forward handle and the handle clamp knob.

Step 9

After tightening the handle clamp knob to the handle bracket and the Bosch® or Makita® forward handle rubber grip, the BackSaver is ready for use. Remember, “Safety Pays”. Ensure proper use of the BackSaver as directed and shown.

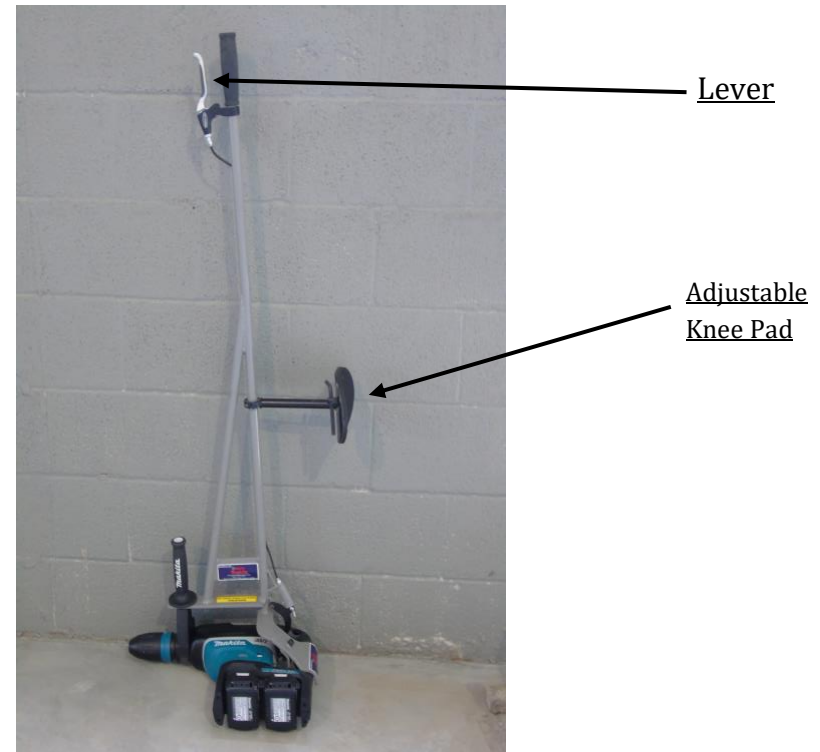


**Forward
Handle**

Handle Clamp Knob

How to properly use the BackSaver:

- The BackSaver is for horizontal drilling only.
- Make sure the BackSaver is used with both hands.
- Ensure the adjustable knee pad is placed on the thigh in a comfortable position. Right above the knee is generally the optimal location for the knee pad.
- Place the drill bit at the desired location and apply pressure using the knee pad.
- Do not pull the lever until the drill is firmly pressed against the concrete.
- To drill accurately, make sure the BackSaver and drill are level.
- Once drilling is complete, make sure the drill is engaged while retracting from the hole.
- Release the lever immediately once the drill is removed from the hole.



Back Saver

FOR DEWALT

www.hammerdrillattachment.com

Phone# 618-797-6078

Patent# 7617885 Patent Pending Adaptor# 15/333,366

Back Saver

for HILTI®

www.hammerdrillattachment.com

Phone # 618-797-6078

Patent# 7617885 Patent Pending Adaptor# 15/333,366

BACKSAVERS ARE AVAILABLE FOR THE FOLLOWING DRILLS

- HILTI®
- BOSCH®
- DEWALT®
- MAKITA®

[BackSaver Disclaimer and Warranty](#)

DISCLAIMER:

- Caution: This product is to be used for stand-up drilling into slabs at grade level, horizontally ONLY. Any other use could result in serious injury.
- Please follow instructions carefully; failure to comply with instructions could result in serious injury.
- Do not attach the BackSaver or adjust parts on the BackSaver while connected to a power source.
- If drill is equipped with an ON/OFF switch, be sure it is in the OFF position before connecting to the power source. Also, be sure trigger is not engaged before connecting to the power source.
- Certain model drills are equipped with trigger locks; on such drills, be sure trigger is not engaged in locked position before, during or after attachment of the BackSaver.
- Do not use the trigger lock option when operating a hammer drill with the BackSaver attached.
- Operate the BackSaver with care and caution.
- Maintain the BackSaver regularly.
- Stay Alert – Watch and be aware of the surroundings when operating any power tool.
- To ensure proper use of the BackSaver, follow the disclaimer in Step 6.
- The BackSaver and drill should be used in compliance with the Drill Manufacturers' instructions.
- Unattended BackSavers should be laid flat on the ground and the power source should be disconnected.
- Regardless of the BackSavers' attachment to the drill, the drill bit should not be handled at any time while the drill is in use, while the drill bit is still turning or while the drill is connected to a power source.

90 DAY LIMITED WARRANTY:

- If inspection shows a problem with the BackSaver that is caused by manufacturers' defect of material, BackSaver will repair or replace the BackSaver without charge (subject to BackSaver's discretion).
- Warranty does not apply where:
 - ✓ The BackSaver has been abused; misused or improperly maintained.
 - ✓ Alterations have been made to the BackSaver
 - ✓ Repairs are required due to normal wear and tear

Thank you for purchasing BackSaver
&
(Your back thanks you also!)

Revolutionize the way you work!

There isn't another tool like this available. Our revolutionary, patented hammer drill attachment will change the way you use a hammer drill forever.

BackSaver highlights:

- Requires less energy while drilling
- Permits application of more pressure while drilling
- Allows for easier, faster and more consistent level drilling
- Increases productivity
- Helps absorb harmful vibration from hammer drill
- Assists in prevention of back injuries

Contact Us

4401 Highway 162
Granite City, IL 62040
Phone: (618) 797-6078
Email: backsaver@hammerdrillattachment.com
Web: www.hammerdrillattachment.com

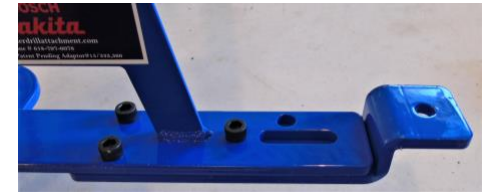
Adapter Instructions

BackSaver for Bosch® and Makita® now includes an adapter that expands the compatibility of the hammer drill attachment to include three new Bosch® rotary hammer drills: RH745, RH850VC, and RH1255VC.

Adapter is pre-installed and must be removed from the BackSaver to fit the following Bosch® and Makita® drills: 540M, 540S, 11264SDS, 11265Spline, HR4041C, HR4013C, HR4002, and XRH07.

To Remove:

1. Using the Hex-Key provided, loosen, and remove the three bolts securing the adapter to the BackSaver unit.
2. For safe keeping, replace bolts into adapter and store with hex-key in toolbox or drill case.



To Install:

1. Place adapter on the lower face of the forward handle anchor plate with the bend pointing up.
2. Insert bolts from the top and tighten using hex-key until secure. See photos below for reference.
3. Install drill according to manual instructions.



